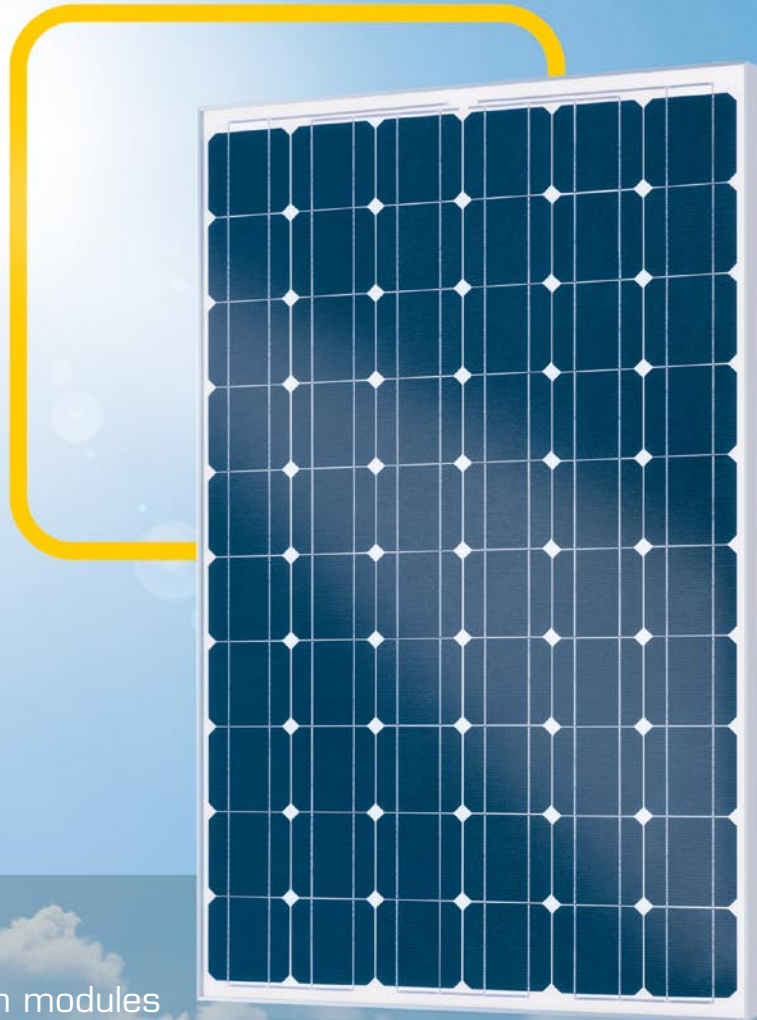


Play it safe



Premium modules

12-year  
product warranty **NEW**

## Premium L mono

225 W • 230 W • 235 W • 240 W

- Guaranteed high yields for decades
- 12-year product warranty  
25-year performance warranty
- Certified production with state-of-the-art technology

# Premium L mono

## Electrical data under STC (Standard Test Conditions: 1000 W/m<sup>2</sup>, 25 °C, AM 1.5)

Rated power	$P_{max}$	225 W	230 W	235 W	240 W
Sorting limits of performance		+/- 2.5 W	+/- 2.5 W	+/- 2.5 W	+/- 2.5 W
Voltage	$U_{MPP}$	29.50 V	29.60 V	29.70 V	29.80 V
Open circuit voltage	$U_{OC}$	37.00 V	37.10 V	37.20 V	37.30 V
Current	$I_{MPP}$	7.63 A	7.75 A	7.90 A	8.00 A
Short-circuit current	$I_{SC}$	8.30 A	8.40 A	8.50 A	8.60 A
Efficiency		13.5 %	13.8 %	14.1 %	14.4 %

## Electrical data at 800 W/m<sup>2</sup>, NOCT (45 °C +/- 2K), AM 1.5

Power in MPP	$P_{max}$	168 W	171 W	175 W	178 W
Voltage	$U_{MPP}$	27.19 V	27.28 V	27.37 V	27.46 V
Open circuit voltage	$U_{OC}$	34.19 V	34.28 V	34.37 V	34.46 V
Current	$I_{MPP}$	6.18 A	6.28 A	6.40 A	6.48 A
Short-circuit current	$I_{SC}$	6.69 A	6.78 A	6.86 A	6.94 A

The efficiency decreases by approximately 3% compared to the efficiency under STC at an irradiation of 200 W/m<sup>2</sup> and 25 °C.

## Temperature data

Power temperature coefficient	$T_K(P_{MPP})$	-0.47 %/K
Voltage temperature coefficient	$T_K(U_{OC})$	-123 mV/K
Current temperature coefficient	$T_K(I_{SC})$	5.45 mA/K

## Further information

Number of cells	60
Max. system voltage	1000 V
Reverse current loading capability	17 A
Front cover	Special hardened low-iron glass
Module connection	Connection box with 3 bypass diodes, 2.6 m solar cable Ø 4 mm <sup>2</sup> , plug connector IP 68 Lumberg LC3, socket at the connection box
Snow load* Load tested according to EN IEC 61215 (ed. 2)	Framed: 5400 Pa $\hat{=}$ 550 kg/m <sup>2</sup>

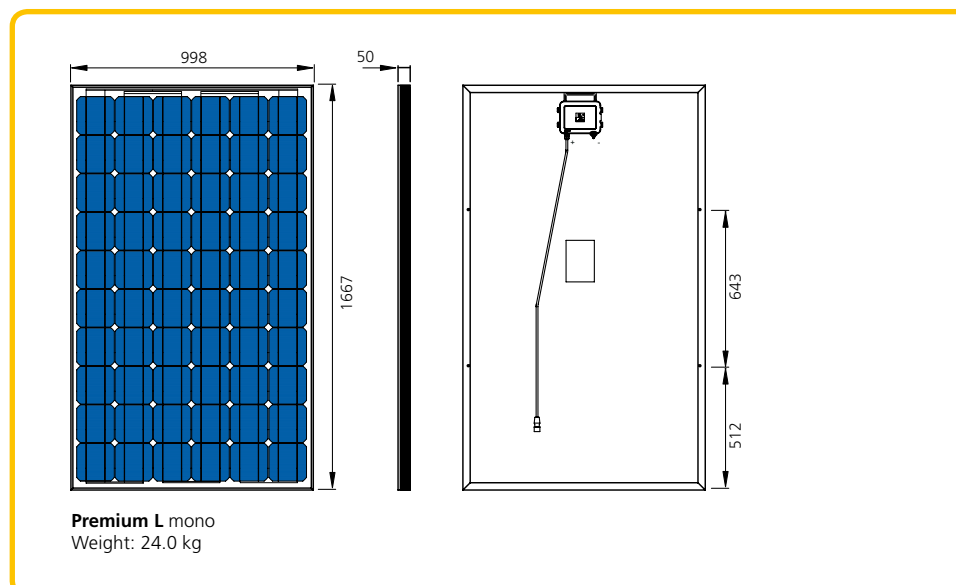
\* In combination with our patented Profilink mounting system and in compliance with the installation and operating manual.

12-year product warranty, 25-year performance warranty on solar power modules according to our additional warranty conditions, which we will gladly send you.

Subject to technical modifications with corresponding follow-up certifications.

## Certifications

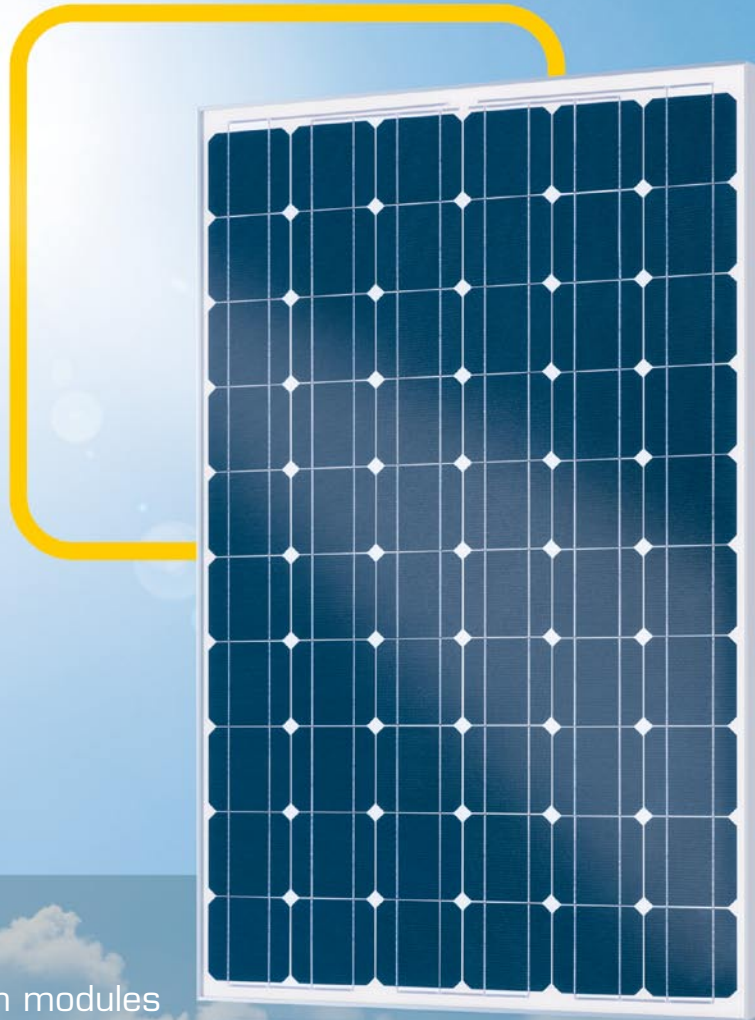
EN IEC 61215 (ed. 2)	
EN IEC 61730-1, -2	
Protection class II	
Directive 2006/95/EG (CE)	
MSC	pending



Your specialist dealer:

**Solar-Fabrik AG**  
Munzinger Str. 10  
79111 Freiburg  
Germany  
Phone +49 (0)761 4000-0  
Fax +49 (0)761 4000-199  
[www.solar-fabrik.de](http://www.solar-fabrik.de)

Play it safe



Premium modules

12-year  
product warranty

**NEW**

## Premium L mono

245 W

- Guaranteed high yields for decades
- 12-year product warranty  
25-year performance warranty
- Certified production with state-of-the-art technology

# Premium L mono

## Electrical data under STC (Standard Test Conditions: 1000 W/m<sup>2</sup>, 25 °C, AM 1.5)

Rated power	$P_{max}$	245 W
Sorting limits of performance		+/- 2.5 W
Voltage	$U_{MPP}$	29.90 V
Open circuit voltage	$U_{OC}$	37.40 V
Current	$I_{MPP}$	8.10 A
Short-circuit current	$I_{SC}$	8.70 A
Efficiency		14.7%

## Electrical data at 800 W/m<sup>2</sup>, NOCT (45 °C +/- 2K), AM 1.5

Power in MPP	$P_{max}$	181 W
Voltage	$U_{MPP}$	27.55 V
Open circuit voltage	$U_{OC}$	34.56 V
Current	$I_{MPP}$	6.56 A
Short-circuit current	$I_{SC}$	7.02 A

The efficiency decreases by approximately 3% compared to the efficiency under STC at an irradiation of 200 W/m<sup>2</sup> and 25 °C.

## Temperature data

Power temperature coefficient	$T_K(P_{MPP})$	-0.47 %/K
Voltage temperature coefficient	$T_K(U_{OC})$	-123 mV/K
Current temperature coefficient	$T_K(I_{SC})$	5.45 mA/K

## Further information

Number of cells	60
Max. system voltage	1000 V
Reverse current loading capability	17 A
Front cover	Special hardened low-iron glass
Module connection	Connection box with 3 bypass diodes, 2.6 m solar cable Ø 4 mm <sup>2</sup> , plug connector IP 68 Lumberg LC3, socket at the connection box
Snow load* Load tested according to EN IEC 61215 (ed. 2)	Framed: 5400 Pa $\hat{=}$ 550 kg/m <sup>2</sup>

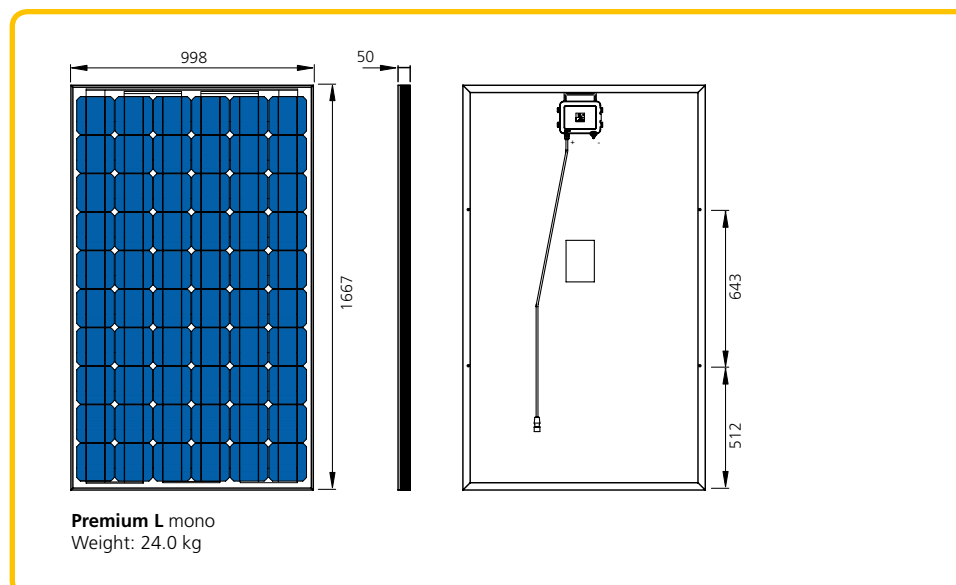
\* In combination with our patented Profilink mounting system and in compliance with the installation and operating manual.

12-year product warranty, 25-year performance warranty on solar power modules according to our additional warranty conditions, which we will gladly send you.

Subject to technical modifications with corresponding follow-up certifications.

## Certifications

EN IEC 61215 (ed. 2)	
EN IEC 61730-1, -2	
Protection class II	
Directive 2006/95/EG (CE)	
MSC	pending



Your specialist dealer:

**Solar-Fabrik AG**  
Munzinger Str. 10  
79111 Freiburg  
Germany  
Phone +49 (0)761 4000-0  
Fax +49 (0)761 4000-199  
[www.solar-fabrik.de](http://www.solar-fabrik.de)